

# Evaluation of Ealing Health Inequalities Transformation Non-Recurrent Funding 2022/23 and 2023/24

YTD Summary

# Introduction

- NHS England has provided every ICB with recurrent health inequality transformation (HIT) funding to **strengthen and accelerate the development of strategic capabilities to identify, understand, and tackle health inequalities.**
- Ealing Borough Based Partnership has been allocated the following funding:

Year	Allocation
22/23	£725,956
23/24	£784,733
24/25	£800,729
25/26	£800,729
26/27	£800,729

- Note – the 24/25 business case is currently being reviewed for approval. The 25/26 and 26/27 allocations are assumed by NHS England, but may be subject to inflationary increases.
- Ealing BBP has proactively developed a suite of interconnected plans that work together to help deliver the Health and Wellbeing Strategy and priorities arising from the Race Equality Commission.
- The transformative schemes complement and drive forward the existing priorities of Ealing BBP with a focus on service delivery to residents and continuing to develop the infrastructure behind the Partnership to enhance joint planning and delivery.

# Highlights

## Therapeutic Thinking

- Across Ealing, suspensions have increased, however across the 10 **high schools with a TT tutor, suspensions decreased** in the Autumn term 2023
- Initial evidence that TT is **having a positive impact on the disproportionality** for the 3 priority minority ethnic groups (Black Caribbean, White and Black Caribbean and children of Somali heritage) amongst suspensions in high schools.
- Suspension rates in these ethnic groups in schools that had training with TT:
  - Prior to TT programme (Autumn 2022) – 18% of total suspensions
  - First 9 months of TT programme – (Autumn 2023) – **12% of total suspensions (6% reduction)**
  - Overall suspension rates across all schools in Ealing increased by 19% over the same time period

## Speech, Language and Communication Needs

- **11 nurseries** scheduled training with the SLCN team – within the top 20% most deprived areas of Ealing

## Asylum Seekers Outreach Event Vaccinations delivered at events in IAC hotels in September 2023:

- 36 flu vaccinations
- 24 Covid vaccinations
- 32 blood pressure checks

## Accelerating Southall Local Leadership

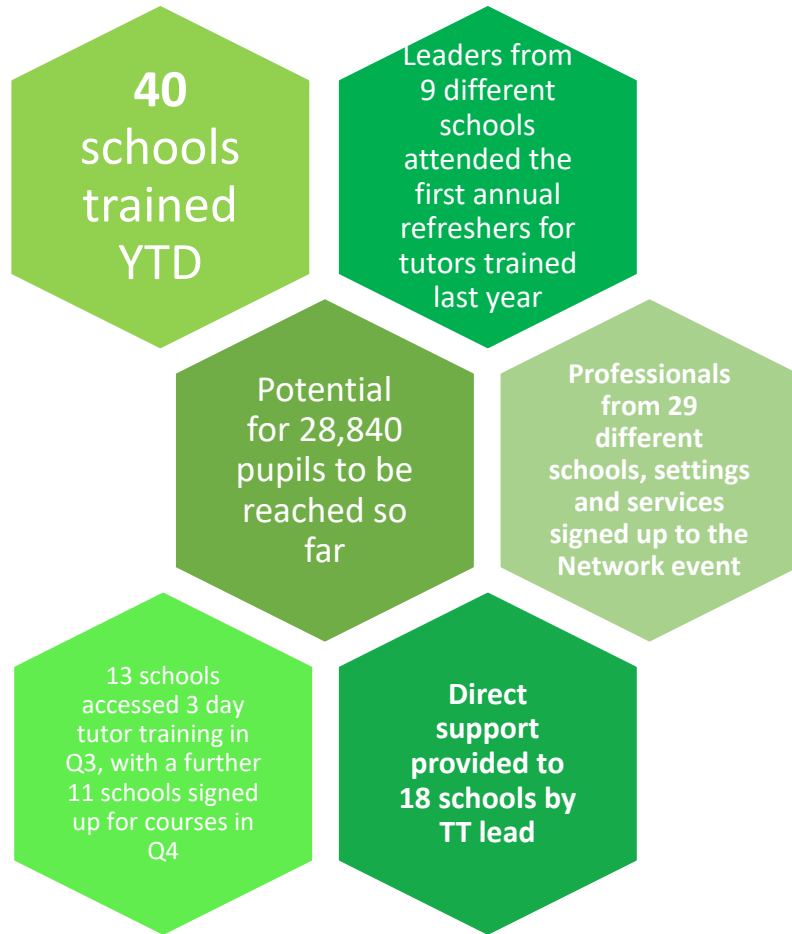
- **Free health checks** session attended by 125 participants in Southall
- Delivered:
  - BMI, weight, height and waist checks
  - Blood pressure checks
  - Diabetes advice
  - Lung Function test
  - Carbon monoxide test
  - Lung Age test
  - Distributing health advice

## School Readiness

- **442 families** attended School Readiness sessions
- Average response rate from parents – “Did you find information given today useful” – 4.78/5

# Therapeutic Thinking

Progress – April – December 2023



## Background

- Providing outreach to schools and co-ordinating existing outreach services to apply a graduated approach through the Therapeutic Thinking programme
- Programme aims to change school culture around behaviour and inclusion
- Close the attainment and exclusion gap between disadvantaged pupils, particularly from certain ethnic groups (e.g. black Caribbean and children of Somali heritage)

## Therapeutic Thinking Lead

- 1 x B8a AfC started in post September 2023
- Post holder has background in Specialist Teaching (SEMH) for a LA, SENCO and Director of SEND for a multi-academy trust

## Challenges experienced

- Teacher strikes impacted on scheduled training. Sessions were rearranged but not all colleagues could attend, therefore total numbers of schools/staff trained were lower than anticipated.

## Direct support to schools

- 18 different schools have received direct support from the TT lead since they started in post
- Includes: assessments of need for individual children, training for specific groups of staff, whole school training, coaching of leaders, information sessions for parents and guidance for Head teachers and senior leaders

# Therapeutic Thinking

## Qualitative feedback from school staff

“Wow! You were a resounding success”

“One staff member said it was the best CPD he has ever had”

“We really value your input with this pupil”

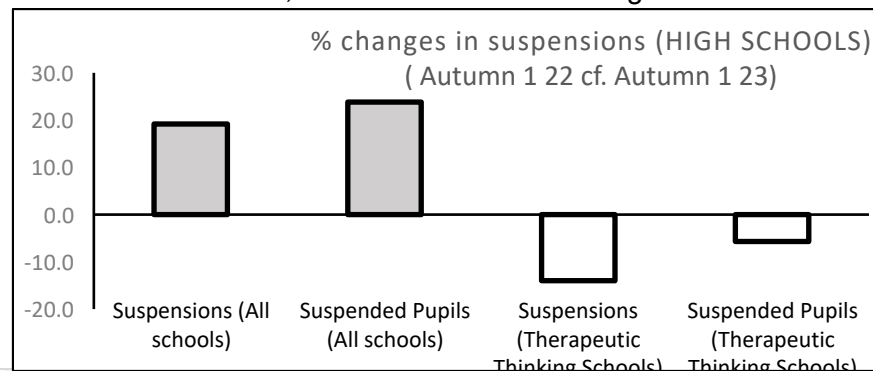
“Really appreciate your support...it was lovely to hear some of the positive feedback from our parents”

## Roll out within the LA

- Intro to TT with following services and team (more than 60 professionals):
- SAFE Evolve (Tier 2 CAMHS), SAFE East Team (Early Help +), REACh (Rapid Engagement – Social Care), Educational Psychology, SEN Assessment Service, Early Years SEND and Inclusion, supporting Families Programme, Children’s Therapy Services (OT, SaLT etc.), Early Help

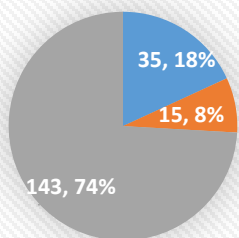
## Impacts

- Across Ealing, suspensions have increased, however across the 10 high schools with a TT tutor, suspensions decreased in the Autumn term 2023



## Suspensions in Ealing high schools (193)

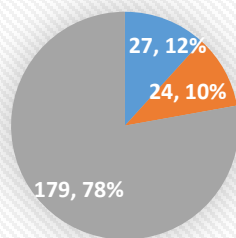
Autumn 1 2022



- Priority groups in 10 TT schools (before training)
- Priority groups in 7 non TT schools
- All others

## Suspensions in Ealing high schools (230)

Autumn 1 2023



- Priority groups in 10 TT schools (since training)
- Priority groups in 7 non TT schools
- All others

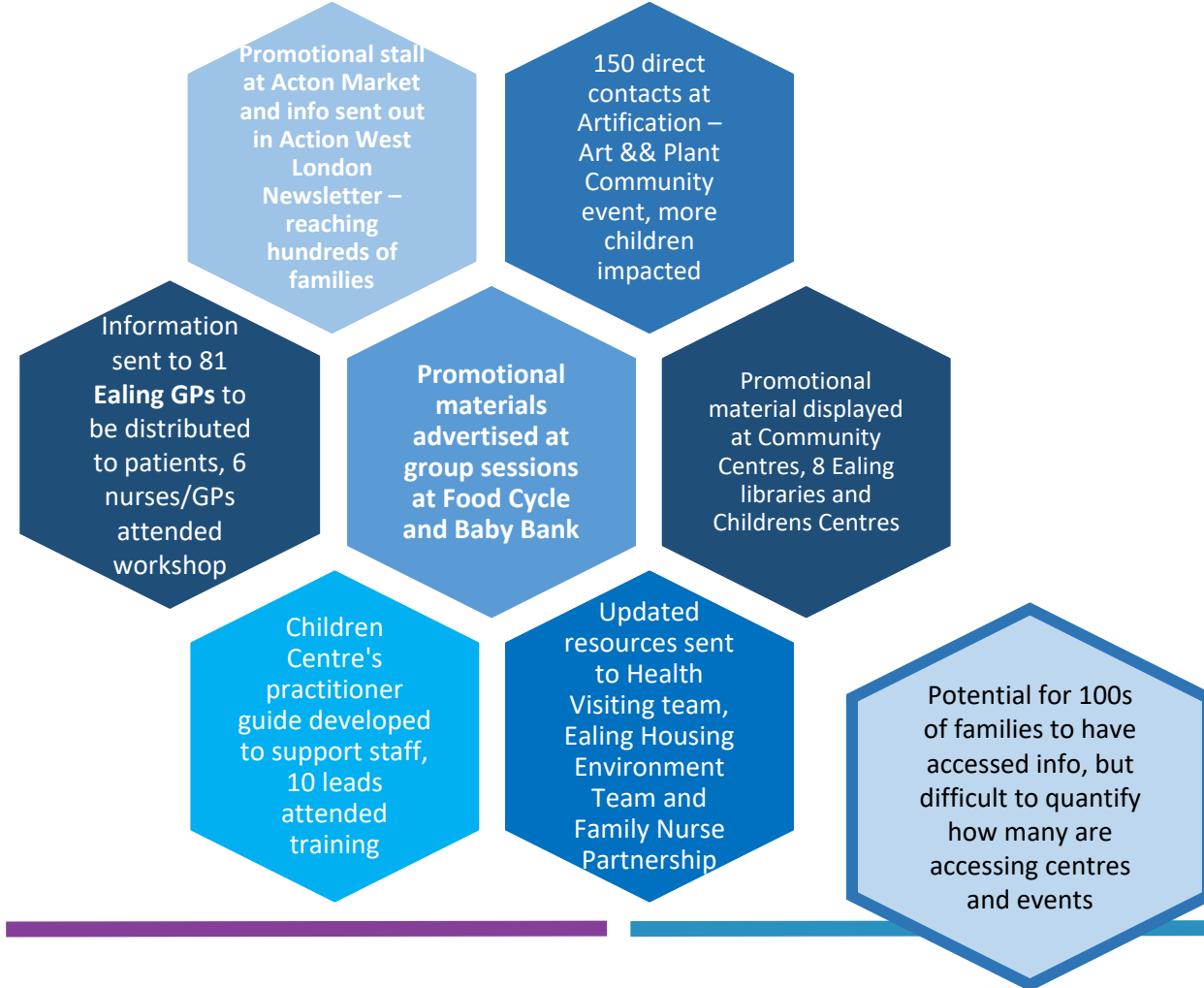
- Initial evidence that TT is having a positive impact on the disproportionality for the 3 priority minority ethnic groups (Black Caribbean. White and Black Caribbean and children of Somali heritage) amongst suspensions in high schools.
- Suspension rates in these ethnic groups in schools that had training with TT:
  - Prior to TT programme (Autumn 2022) – 18% of total suspensions
  - First 9 months of TT programme – (Autumn 2023) – 12% of total suspensions
  - Overall suspension rates across all schools in Ealing increased by 19% over the same time period

# Healthy Start and Sugar Smart

## Background

- £57,864 to fund 1 x B6 AfC equivalent pay scale within Child Weight Management Service: Food Project Officer
- Post holder started new contract 12<sup>th</sup> June 2023 (2<sup>nd</sup> year continuation of scheme using alternative funds)
- Raise awareness amongst disadvantaged communities about the national Healthy Start voucher scheme
- Enable greater access to nutritious food to low income families
- Promotes organisations, particularly in the most disadvantaged neighbourhoods to be 'sugar smart', thus reducing unhealthy food options to Ealing's children

## Healthy Start (April – December 2023)



# Healthy Start and Sugar Smart

## Sugar Smart Deliverables July – September 2023

- Pause to delivery of Healthy Start scheme due to resignation of Healthy Start Practitioner in October 2023.
- In the interim the Healthy Weight Team have continued to deliver Sugar Smart Cookery Clubs, but there has been a pause in Healthy Start activity
- Post holder recruited to in January 2024 to continue the work

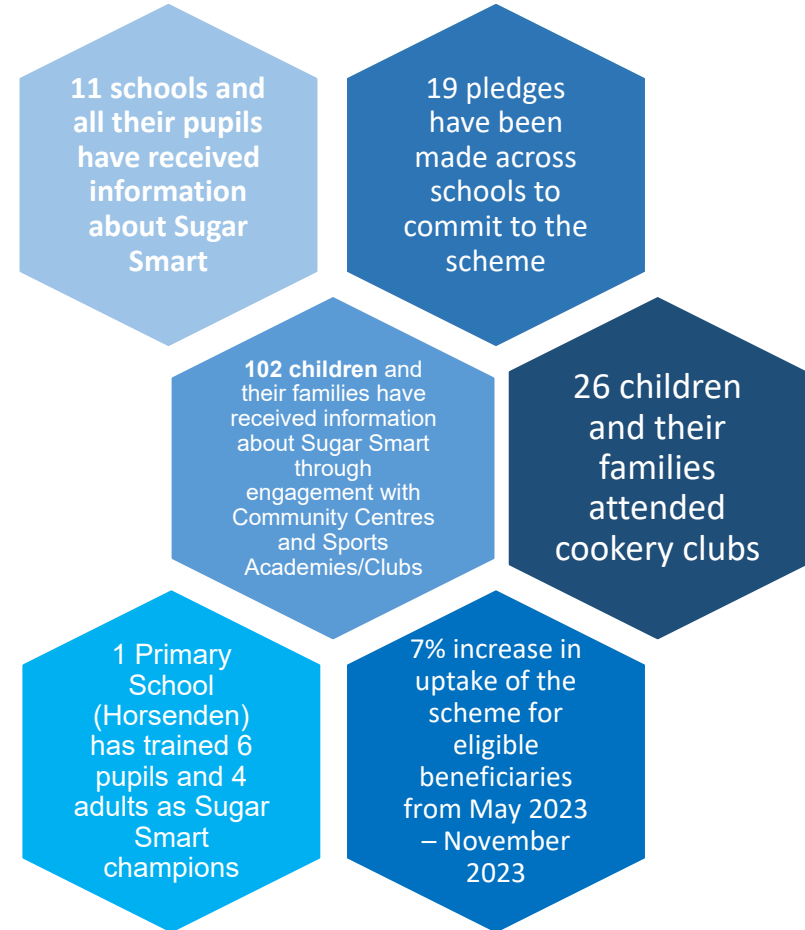
## Healthy Start Uptake in Ealing

- May 2023 – 57% uptake (entitled beneficiaries 1895, total eligible beneficiaries 3352)
- Sept 2023 – 59% Uptake (Entitled beneficiaries 1864, Total Eligible Beneficiaries 3144)
- Nov 2023 – 64% Uptake ((Entitled beneficiaries 1899, Total Eligible Beneficiaries 2954)
- Note – The total entitled beneficiaries is the number of those that are actively using the card scheme for healthy start, total eligible are those eligible that aren't necessarily active in using the scheme
- Unit of measure is a family unit

## Rate of obesity in children (before scheme)

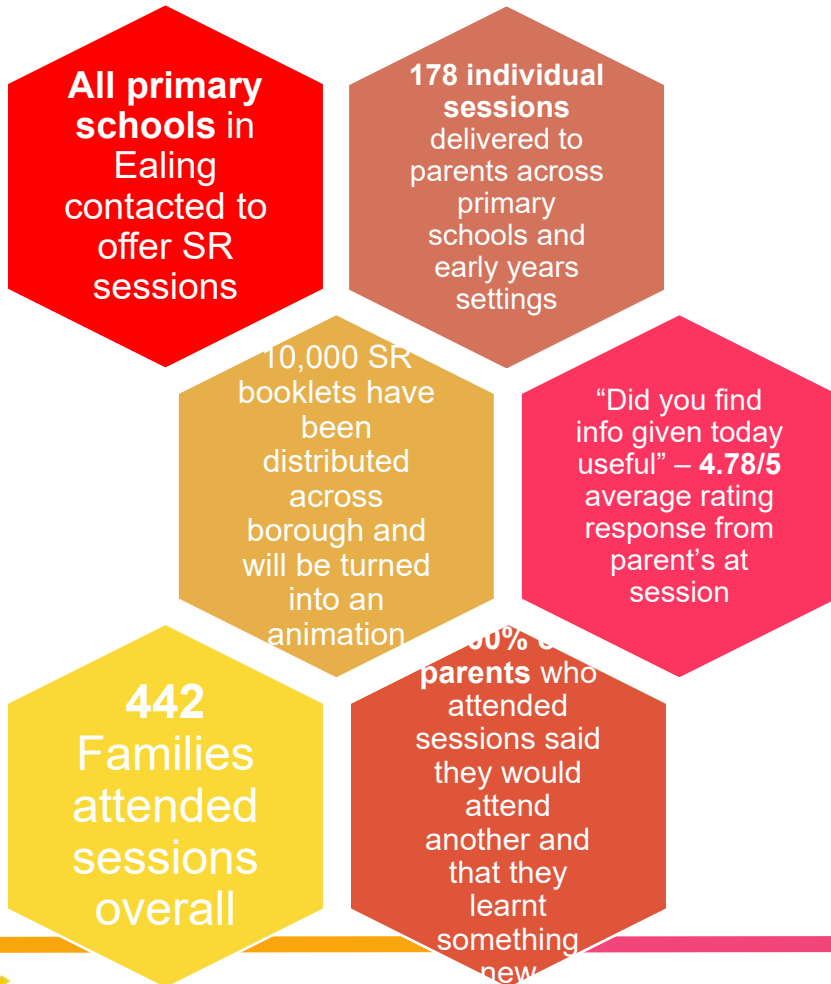
- 21/22 – Reception children 21.5%, Year 6 children 41.3%
- This data is only available annually so will be analysed again once the scheme has finished

## Sugar Smart (April – December 2023)



# School Readiness

Deliverables April – December 23



## Background

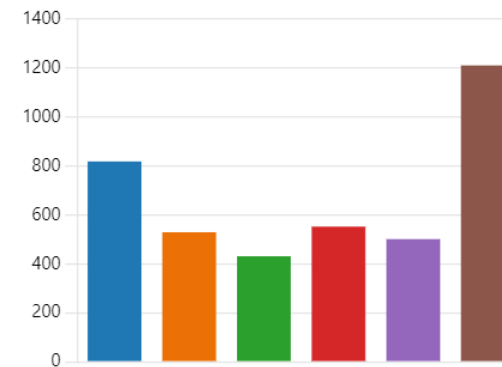
- £57,84 to fund continuation of a post holder (started Oct 2021, contract renewed Oct 22)
- To improve equality of access to early help and support and reduce the difference in school readiness (SR) scores, targeting resources in areas with the lowest SR scores (e.g. Northolt) and with certain communities with lower SR scores (e.g. BAME Communities)
- Early Years settings identified within top 20% areas of deprivation for targeted support and guidance
- Whole system approach to reduce gap in SR

## Families attending specific sessions:

19. Which area of school readiness would you like support with

[More Details](#)

Communication and Social Skills	818
Self-Care Skills/Dressing	529
Toileting	431
Healthy Eating and Fussy Eating	552
All of the above	501
None	1210





# Cost of Living – Falls Prevention and Warm Spaces

(Scheme finished – January – March 2023)

## Background

- £42,500 funding requested to help specific community groups that are most affected by inequalities
- Completely new spaces could receive grant of up to £2.5k, spaces in existing use up to £1k
- Physical activity and Community groups
- Additional time together for social connection and sharing of hot refreshments
- Activities funded to prevent falls, reduce social isolation and enable older residents to keep well in their mental health
- Services ran for 13 weeks – January 2023 – March 2023



# Cost of Living – Falls Prevention and Warm Spaces

## - Qualitative Feedback



## Lessons Learned

- Start the program earlier (November)
- Ensure more even distribution of spaces - Acton was lightly served
- Provide more publicity materials – some spaces had difficult publicising facilities as there was no recognisable Ealing Warm Spaces branding
- Smaller spaces were concerned about being overwhelmed – led to hesitancy to widely publicise themselves and some venues having disappointing attendance figures
- Lack of activities provided on site at certain spaces led to low traffic at these sites. Libraries and existing faith community groups performed better in this regard

# Cost of Living – Proactive Calling

## Background

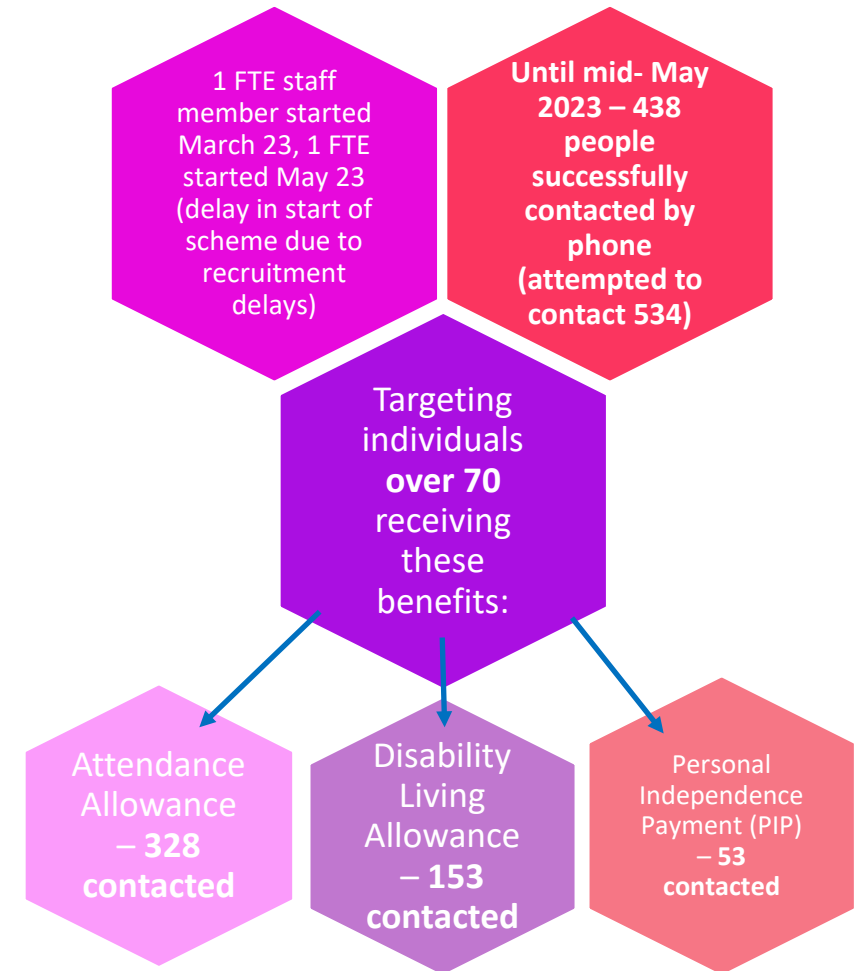
- £32.5k to ensure vulnerable residents are aware of different types of support available to them and to check in on them from a general wellness perspective
- Initiative is ongoing until funding runs out (estimated end of July) as the scheme started late (end of March)
- Once this cohort is complete, further cohorts will be identified using the data sets available

## Included:

- Linking lone residents to befriending services
- Promoting energy advice schemes to those struggling to heat their homes
- Promoting warm spaces and indoor activities
- Identifying who may be entitled to financial support and making necessary referrals
- Linking residents to other local community organisations depending on their need and circumstances

## Distribution of printed materials to agreed cohorts

- 1056 letters
- 945 SMS messages



# Speech, Language and Communication Needs Early Intervention

## Background

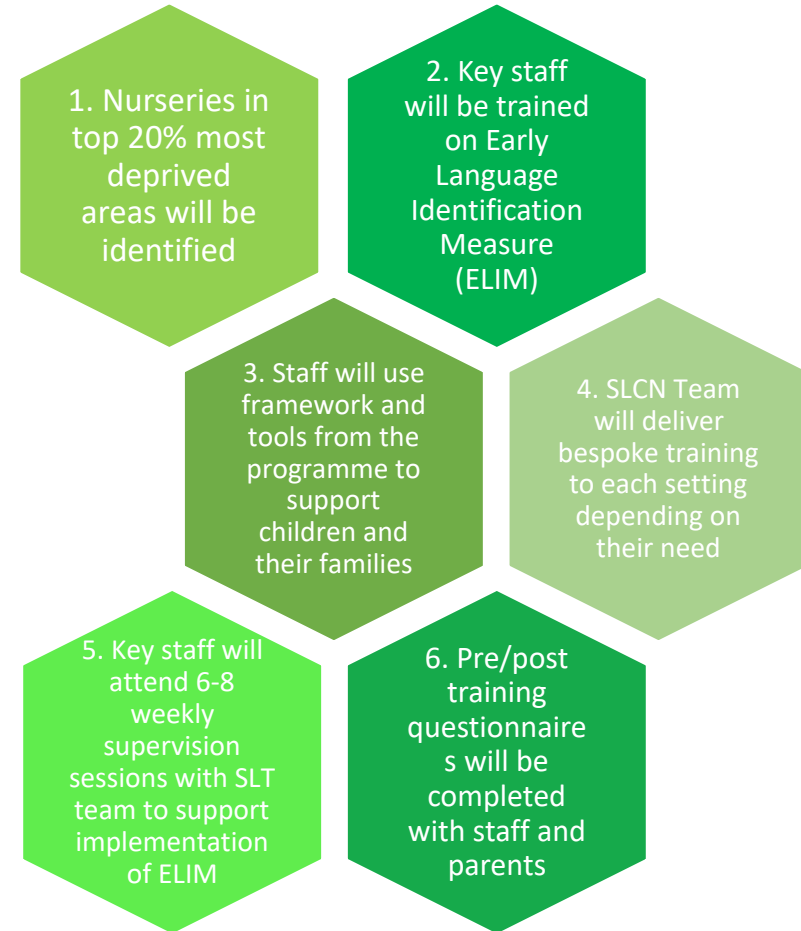
- £141,500 for 2 years
- To expand the expertise, outreach and specialised Speech, Language and Communication training to support PVI's and front facing early years' services
- Focus in top 20% most deprived areas
- Aim to better identify and support children under 5 with SLCN and their families

## Recruitment update

- 0.8 FTE SLT Nursery Nurse Level 7 (note – not B7 AfC) requires SLCN experience with a relevant degree – undergoing recruitment
- 0.8 FTE SLT Assistant (AfC B4, requires SLCN experience) – post holder in place January 2024
- 0.2 FTE Consultation with Occupational Therapist (B6 AfC). This role will be explored once Level 7 and B4 roles are in post

## Deliverables (From December 2023, as first post holder in place January 2024)

- Training scheduled in early 2024 for 11 nurseries
- 3 childminders have been identified for training, but dates not arranged at last update



# Accelerating Southall Local Leadership Capacity

## Background

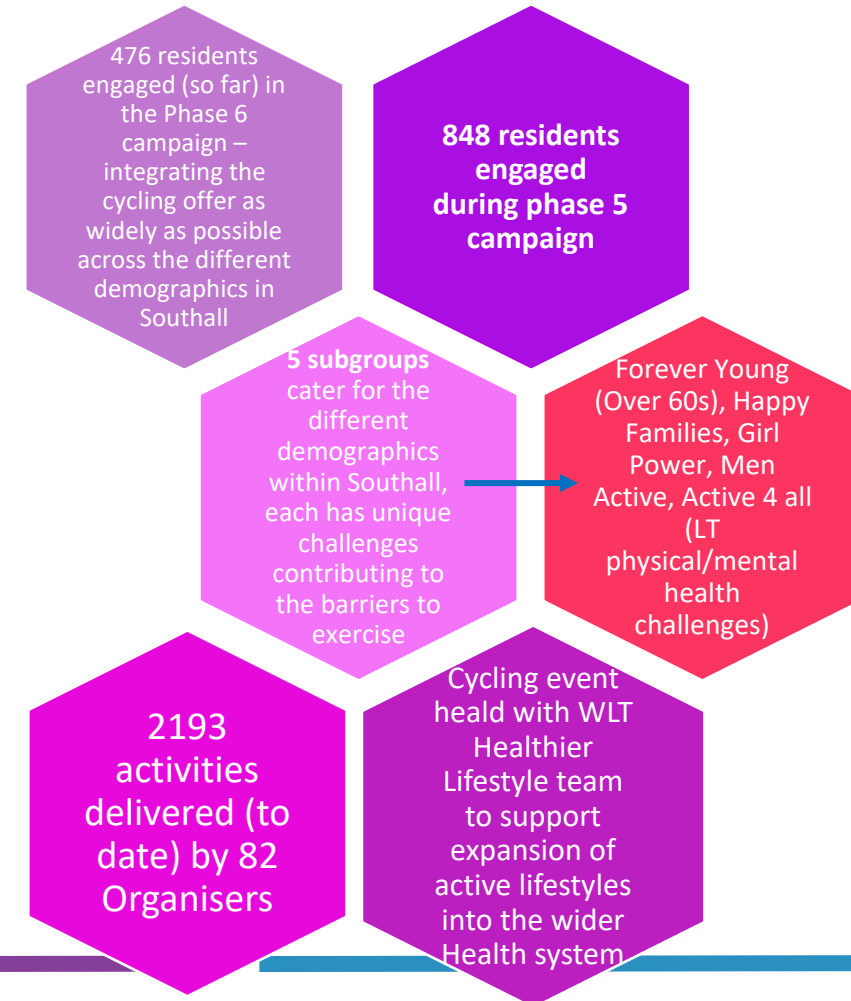
- Continuing the support to provide to 30 community leaders (organisers) from different and diverse backgrounds.
- HIT funding is for 30 Organisers, representing 42% of the total of 72 Organisers
- Incorporating all groups and faiths in Southall
- Encouraging residents to join the Social Movement campaign to become more active through the Active Communities Team (ACT) and Let's Go Southall (LGS).
- Organisers arrange activities to improve physical and mental health in community groups, e.g. cycling, outdoor gyms, "Let's Talk" sessions
- The programme is a co-designed approach that empowers Southall residents – through providing skills, knowledge and resources – to make a lasting change, based on true human insight.
- Each Organiser creates deep 'listening' relationships at least 10 local residents per campaign
- Process involves listening to residents, creating a theory of change and then defining a tactic to implement

## Evaluation

- Brunel University have produced mid-reports, including three overall evaluation items:
- **Digital Story Telling** – involving those taking part in community projects by building evidence about their lived experience. (qualitative evidence on next slide)
- 3 core themes emerged during the Digital Story Telling project that explain the impact of the social movement on improving physical and mental health:
  1. Narratives of health
  2. Leadership and self-organisation
  3. Locality, community connectedness and collaboration

[Digital Story Telling YouTube link](#)
- *Explanatory Framework* – currently in draft (internal comments being gathered before wider sharing)
- *Let's Ride Southall Deep Dive case study* – currently in draft (due for completion April 2024)

## Progress – April – December 2023



# Accelerating Southall Local Leadership Capacity

## Qualitative feedback from participants



- **Training Programmes delivered in Q2:**
  - Super Organiser Campaign weekly 77
  - Activator Training Programme (The Great Outdoors) – 10
  - Harvard Leadership People's Management Programme (modules 1-12) - 14
  - Teams Development Programme – 68
  - Cycling Training – 26
  - Mechanics Training - 2
- **5 campaigns will be run throughout the program** including:
  - NHS Checks Engagement inc. Diabetes Awareness
  - Cycle Club
  - Cycling Programme Delivery
  - Mental Health Programme
  - Physical Activity Programme Delivery (all 30 organisers have taken part in this campaign)

# Accelerating Southall Local Leadership Capacity

- In partnership with the Healthier Lifestyles team, the Organisers hosted a free Health Checks session.
- There are low rates of health checks within Southall communities, so these types of engagement events create more than just awareness and medical tests, but link directly into healthier and more physically active pathways with the support of Let's Go Southall and it's Active Communities Team.
- 125 participants attended the Dominion Centre on 15<sup>th</sup> November 2023
- Now working in partnership on a regular basis
- 13 NHS staff delivered:
  - BMI, weight, height and waist checks
  - Blood pressure checks
  - Diabeties advice
  - Lung Function test
  - Carbon monoxide test
  - Lung Age test
  - Distributing health advice



# Asylum Seekers – Ealing Community Food Solutions and Integrating into Communities

## Outreach event – Taking Healthcare to the people

- Event coordinated at one of the IAC on 14<sup>th</sup> November 2023
- In collaboration with: DICE, Dieticians, podiatrists, lung function screening team, TB awareness, digital programme and smoking cessation team at WLT
- Health checks for 70 residents (BMI, BP, Diabetic Screening)
- 44 lung function screenings
- 14 smoking cessation referrals with medicine delivered to the site
- 8 pre-paid mobile sims (6 months free, then £5 per month) distributed to residents

## Vaccinations delivered at events in IAC hotels in September 2023:

- 36 flu vaccinations
- 24 Covid vaccinations
- 32 blood pressure checks



## MindFood community gardening pilot

- MindFood supports people with depression, anxiety and stress to improve their wellbeing through gardening, mindfulness and creativity
- Collaboration with MindFood to run 2 sessions at a farm and allotment for the residents in the Initial Assessment Centres (asylum seeker hotels) in Ealing
- The food grown by residents could be brought back to the hotel to enjoy and/or shared with the food banks



## Spectra – sexual health and emotional wellbeing, monthly visits to IAC hotels since February 2023

- 24 HIV Point of Care Tests
- 6 Full STI screening tests
- 117 total contacts outreached to
- 156 condoms distributed to service users
- 79 brief conversations with service users
- 39 detailed conversations with service users
- 10 service users referred onwards to external services
- 4 service users given information on how to access PEP
- 2 service users given information on how to access PrEP

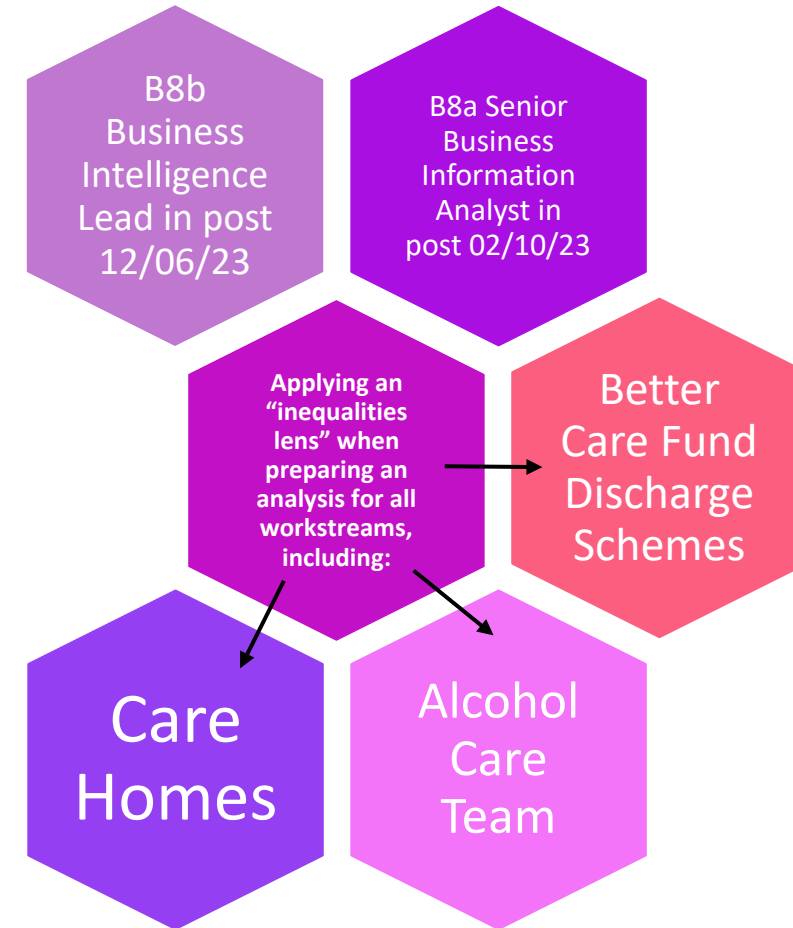


# Business Intelligence Infrastructure

## Background

- To strengthen Business and Strategic capacity across the BBP
- *Most programme workstream areas (Integrated Neighbourhood Teams, Population Health and Inequalities and CYP) are being developed, so no impact analysis has been done as yet*
- **Core20Plus5**
- Produced borough/ward maps highlighting the top 20% most deprived areas with GP practices mapped as well
- Providing BI support to the Plus Population cohort – Ealing Homeless Board and refugee/asylum seekers working group
- Establishes a local cancer screening and Immunisations uptake report at practice level to allow for targeted support for practices with low uptake
- **Integrated Neighbourhood Teams (INTS)**
- Using Pop Health data, identifying areas of inequalities and clinical needs/unmet needs
- Deep dive into mortality data by age, gender, ethnicity and deprivation as huge variations in life expectancy across Ealing
- Using the LBE data for highlights around the wider determinants of health by the 7 towns
- This will be presented in the INT workshop end of Nov to review and consider possible priority areas based on the data
- **Population Health and Inequalities sub-group**
- As part of the HWBS action plan for Year 1, BBP BI team have been working jointly in partnership with the Ealing Council Public Health BI team making progress that is monitored in a fortnightly BBP Data and Intelligence group
- Building on the 7 Towns Profile database created for APHR 2023
- **Children and Young People**
- Initial discussions took place to create a vulnerable families dataset linking parents, children, siblings, carers, guardians with key attributes that GP practices can use as intelligence for targeted support for vulnerable families

June – December 2023



# Infrastructure Capacity in PH to help deliver HWBS and BBP Inequalities priorities / Targeted Engagement and co-production with Black British population

- The Public Health Consultant is responsible for the delivery of the HWBS and BBP Inequalities priorities. Work to date has included:
  - Conducting a 6-month update on the HWBS progress, including introductions to all action owners, discussing what progress has been made and plans to complete the 1 year action plan
  - Collating 40 case studies of community projects in line with the HWBS
  - How to develop a strategic approach to inclusion health locally
- The PH Consultant has led on the coordinated targeted engagement with Black British communities to identify engagement and co-production routes to improving community health and wellbeing.
  - The funding will be used to create a novel leadership and development programme to identify Black community leaders and embed them into local forums and boards to develop the black voice in decision-making spaces.
  - Individual £5,000 funding grants will be issued to organisations (administered via EHCVS) to support health and well-being and the reduction of inequalities in their communities

# Evaluation Findings: Accelerating delivery of Core20plus5

## Core20

The most deprived 20% of the national population as identified by the Index of Multiple Deprivation

- **Healthy Start/Sugar Smart** raises awareness amongst disadvantaged communities
- Enables greater access to nutritious food to low income families
- **Therapeutic Thinking** closes the exclusion and attainment gap between disadvantaged pupils, particularly from certain ethnic groups
- **School Readiness** targets early years providers in the top 20% most deprived areas
- **Business Intelligence team** produced borough/ward maps highlighting the top 20% most deprived areas



## Plus

Identify local areas of inequalities and deprivation and work to target these populations e.g. Asylum seekers, BAME and ethnic groups that may not have equal access to services

- **Therapeutic Thinking** aims to close the attainment and exclusion gap between disadvantaged pupils, particularly from certain ethnic groups (e.g. black Caribbean and children of Somali heritage). Educational attainment is one of the most protective factors in avoiding inequality of health outcomes in later life.
- **SLCN Early Intervention** works to reduce the widening SLT inequalities that were exacerbated by the pandemic, particularly amongst certain ethnic groups
- Ealing is the 3<sup>rd</sup> most ethnically diverse local population in the UK with 85% of pupils being of minority ethnic origin (compared to 33% nationally), so all schemes working with the community will be working with, and improving outcomes for minority ethnic residents.
- **Business Intelligence team** are providing BI support to the Plus Population cohort – Ealing Homeless Board and refugee/asylum seekers working group

## 5

Key clinical areas of health inequalities

- **Healthy Start/Sugar Smart** will reduce poor oral health among children and young people by improving their food choices
- **School Readiness** sessions were attended by Oral health leads to offer advice to parents
- **Therapeutic Thinking** lead will work to implement TT across all schools in Ealing with the highest social and emotional mental health needs and will reduce exclusion and improve attendance, improving overall mental health in these groups of children
- **Business Intelligence team** established a local cancer screening and Immunisations uptake report at practice level to allow for targeted support for practices with low uptake

# Next Steps 2024-25

## **Heathy Ealing**

The goal of Healthy Ealing is to improve health and wellbeing in local communities by improving access and support for the building blocks of health, upskilling the workforce to support local communities in a culturally competent manner and running events to reduce health and social inequalities in Ealing through structured public education, raising awareness and signposting.

## **How: Team to work solely on addressing health and social inequalities in Ealing:**

The 3 person team would coordinate and organise events with the different stakeholders, i.e. charities, voluntary sector organisations, community champions, social prescribers. The venue locations will maximise the benefits of community assets; using locations that resonate with the target communities. Moreover, trusted voices from within the community will be used to disseminate the messages; harnessing the benefit of existing trusting relationships.

## **Target Communities (but not limited to this)**

Asylum Seekers

Homeless/rough sleepers

Gypsy/Roma community

Hong Kong Community

Ukrainian community

Ethnic groups experiencing specific inequalities in health and social outcomes

Vulnerable migrants